

Infrastructure Life Extension

THE FASTEST ROUTE TO NET ZERO



**STRUCTURAL
REPAIRS**

ENGINEERED TO PROTECT.
BUILT TO LAST.



With the right engineering intervention, infrastructure life can be extended by another **50 years or more**.



Extending infrastructure life **avoids demolition**, **reduces embodied carbon**, and accelerates delivery of **Net Zero** targets.

Roger Line - 2025

CUTTING-EDGE SOLUTIONS. PROVEN PERFORMANCE. A SUSTAINABLE FUTURE.



**CUTTING-EDGE
SOLUTIONS**

Innovative engineering
for lasting impact.



**AWARD-WINNING
INNOVATION**

Pioneering solutions
that set new standards.



**PROVEN. RELIABLE.
TRUSTED.**

Delivering certainty
where it matters most.



**ENGINEERED TO PROTECT.
BUILT TO LAST.**

Strengthening infrastructure
for generations.

**CHANGING INFRASTRUCTURE.
CHANGING THE WORLD.**

structuralrepairs.com

THE HIDDEN DETERIORATION CYCLE

HOW WATER INGRESS DESTROYS CONCRETE FROM WITHIN

1. WATER INGRESS

Rain, humidity, chlorides and contaminants penetrate porous concrete

2. CORROSION INITIATES

Water and oxygen reach the steel reinforcement

3. STEEL CORRODES AND EXPANDS

Corrosion products expand up to 6-10x the original volume

4. CONCRETE DELAMINATION

Expansion causes internal cracking, debonding and delamination (concrete cancer)

CONCRETE CANCER

Hidden damage spreads beneath the surface

CONCRETE BECOMES POROUS OVER TIME

OXYGEN
MOISTURE

5. STRUCTURAL CAPACITY REDUCES

Deterioration accelerates unseen, leading to premature failure

**RISK TO ASSETS.
RISK TO LIVES.**



**FAILURE IS COSTLY.
PREVENTION IS SMART.**

MOST DETERIORATION BEGINS HIDDEN BENEATH THE SURFACE LONG BEFORE VISIBLE FAILURE OCCURS

TIME
Concrete naturally ages and becomes more porous

WATER INGRESS
Moisture, oxygen and contaminants penetrate the concrete

CORROSION
Steel corrodes and expands up to 6-10x its volume

DELAMINATION
Cracking, spalling and debonding weaken the structure

FAILURE
Reduced capacity, higher risk, higher cost, potential collapse



STRUCTURAL REPAIRS IDENTIFIES **HIDDEN DETERIORATION EARLY** AND INTERVENES **BEFORE STRUCTURAL FAILURE** OCCURS



**PRESERVE. PROTECT.
EXTEND. SUSTAIN.**
EXTENDING INFRASTRUCTURE LIFE.
ACCELERATING NET ZERO.

ADVANCED INSPECTION & DIAGNOSTICS

SEEING BEYOND THE SURFACE TO REVEAL HIDDEN RISK



Infrastructure
Life Extension

THE FASTEST ROUTE TO NET ZERO



**KNOWLEDGE PREVENTS FAILURE.
DATA DRIVES DECISIONS.**

Our multi-technology inspection process identifies hidden defects, quantifies risk and provides a clear roadmap for intervention.

OUR MULTI-TECHNOLOGY APPROACH



GPR SCANNING

Detects voids, honeycombing, delamination & embedded features



ULTRASONIC PULSE ECHO

Measures concrete quality, thickness and internal defects



HALF-CELL POTENTIAL

Identifies areas of active corrosion risk



PERMEABILITY & MOISTURE MAPPING

Pinpoints water ingress routes and saturation levels



DRONE & LIDAR SURVEYS

High-resolution mapping, access to hard-to-reach areas



DATA ANALYTICS & REPORTING

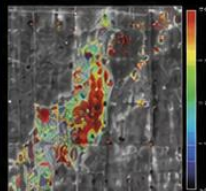
Risk scoring, condition grading and life expectancy modelling

WHAT WE IDENTIFY

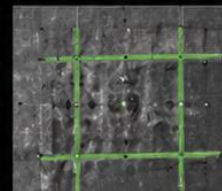
- ✓ Voids & honeycombing
- ✓ Cracks (active & historic)
- ✓ Delamination & debonding
- ✓ Corrosion of reinforcement
- ✓ Water ingress pathways
- ✓ Concrete quality variations
- ✓ Loss of cover
- ✓ Structural capacity reduction
- ✓ Remaining life expectancy

REAL INSIGHT. REAL DATA. REAL CONFIDENCE.

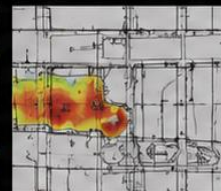
GPR VOID MAP



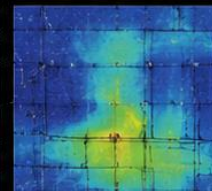
REINFORCEMENT LOCATION



CORROSION RISK MAP



MOISTURE MAP



From **uncertainty** to **clarity**. From **data** to **decisions**.



IDENTIFY. ASSESS. QUANTIFY. PLAN.

We provide the intelligence you need to protect assets, prioritise investment and extend infrastructure life.



Specialist Engineers
& Inspectors



Millimetre-Level
Accuracy



Risk-Led
Assessment



Clear, Actionable
Reporting

**INFORMED TODAY.
SAFE TOMORROW.
SUSTAINABLE FOREVER.**

MEASURE. ASSESS. PREDICT. PRIORITISE.

QUANTIFYING RISK AND REMAINING LIFE WITH PRECISION



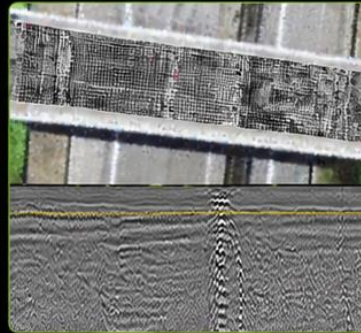
Infrastructure
Life Extension
THE FASTEST ROUTE TO NET ZERO

1. ADVANCED SCANNING & MAPPING

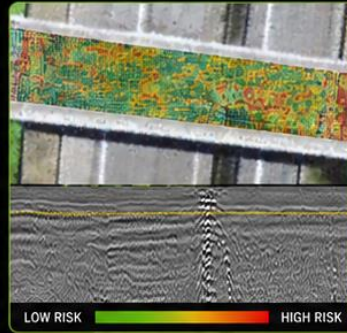
We see what others can't.
Multi-technology surveys reveal hidden defects, deterioration and risk.



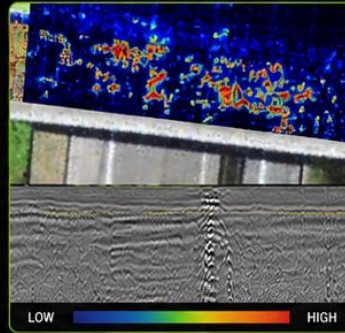
GPR REINFORCEMENT MAP



CORROSION RISK MAP



VOID & DELAMINATION MAP



OUTPUTS THAT MATTER

- ✓ Accurate condition mapping
- ✓ Quantified defects and risk
- ✓ Depth, size & severity identified
- ✓ Corrosion & moisture profiling
- ✓ Life expectancy modelling
- ✓ Prioritised intervention roadmap
- ✓ Digital records for compliance and asset management

**RESULT: CLARITY.
CONFIDENCE. CONTROL.**

From uncertainty to actionable intelligence.

2. LIFE EXPECTANCY & CONDITION ASSESSMENT

We don't just find defects –
we predict the future.

- ✓ Structural capacity assessment
- ✓ Remaining Life Expectancy (RLE)
- ✓ Deterioration rate modelling
- ✓ Risk scoring & consequence analysis
- ✓ Optimised intervention timing

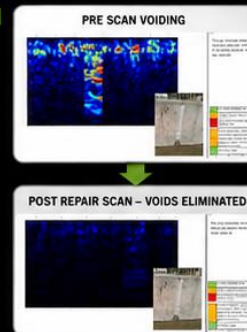


EXTEND TODAY. SAVE TOMORROW.

3. BEFORE & AFTER VERIFICATION

We prove performance.
Every intervention is
independently verified.

- ✓ Pre-repair defect baseline
- ✓ Post-repair verification scans
- ✓ Voids eliminated
- ✓ Continuity restored
- ✓ Strength & durability enhanced
- ✓ Evidence for compliance and assurance

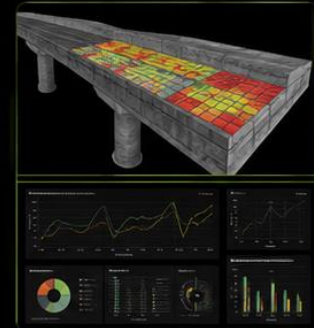


MEASURE. INTERVENE. VERIFY. ASSURE.

4. DIGITAL TWIN & ASSET INTELLIGENCE

All data captured, stored
and managed in our digital
platform for the complete
asset lifecycle.

- ✓ 3D condition models
- ✓ Historical trend analysis
- ✓ Predictive maintenance
- ✓ Lifecycle planning
- ✓ Compliance reporting
- ✓ Total asset visibility



DIGITAL INTELLIGENCE FOR SMARTER ASSETS.



WE PROVIDE THE INTELLIGENCE YOU NEED TO MAKE THE RIGHT DECISIONS,
AT THE RIGHT TIME, EXTENDING INFRASTRUCTURE LIFE AND PROTECTING FUTURES.



EXTENDS LIFE
BY 50+ YEARS



REDUCES EMBODIED
CARBON



LOWER LIFECYCLE
COSTS



SAFER ASSETS.
PROTECTING LIVES.

2 VERIFY. INTERVENE. ASSURE.

DATA-LED CONFIDENCE AT EVERY STAGE

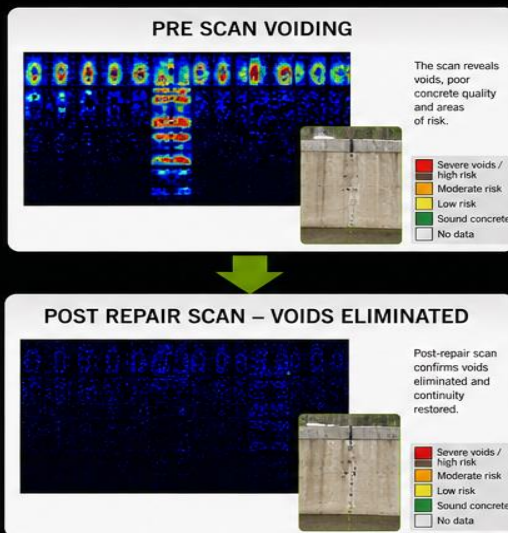


Infrastructure
Life Extension
THE FASTEST ROUTE TO NET ZERO

3. BEFORE & AFTER VERIFICATION

We prove performance.
Every intervention is
independently verified.

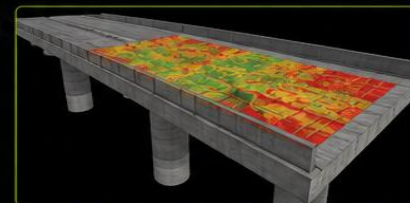
- ✓ Pre-repair defect baseline
- ✓ Post-repair verification scans
- ✓ Voids eliminated
- ✓ Continuity restored
- ✓ Strength & durability enhanced
- ✓ Evidence for compliance and assurance



4. DIGITAL TWIN & ASSET INTELLIGENCE

All data captured, stored and managed
in our digital platform for the
complete asset lifecycle.

- ✓ 3D condition models
- ✓ Historical trend analysis
- ✓ Predictive maintenance
- ✓ Lifecycle planning
- ✓ Compliance reporting
- ✓ Total asset visibility



THE BENEFITS OF INTELLIGENCE-LED INFRASTRUCTURE MANAGEMENT



EXTENDS LIFE
BY 50+ YEARS



REDUCES
EMBODIED CARBON



LOWER
LIFECYCLE COSTS



SAFER ASSETS.
PROTECTING LIVES.



DATA DRIVEN.
DECISION READY.



FROM UNCERTAINTY TO CLARITY. FROM DATA TO DECISIONS.
MAKING INFRASTRUCTURE STRONGER, SAFER AND MORE SUSTAINABLE.

3 INNOVATE. PROTECT. DELIVER.

PATENTED TECHNOLOGY. PROVEN SOLUTIONS.



Infrastructure Life Extension
THE FASTEST ROUTE TO NET ZERO

OUR INNOVATION IS PROTECTED

We invest in research, innovation and intellectual property to deliver unique, high-performance solutions that extend infrastructure life, enhance safety and drive Net Zero outcomes.



PATENT APPLICATION

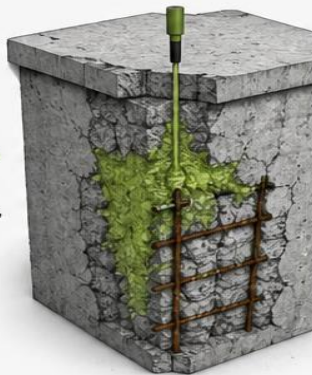
Encapsulator®
LIFE EXTENSION SYSTEM

PATENT APPLIED FOR

Encapsulator® Life Extension System

A unique, non-destructive encapsulation technology that halts concrete deterioration, seals against water ingress and extends infrastructure life by 50+ years.

Patent status: Application submitted (UK Patent Office)
Patent Pending



TRADEMARKS GRANTED



EXAMINED ACCEPTED
PUBLISHED IN TRADE MARKS JOURNAL
OPPOSITION PERIOD IN PROGRESS

OPPOSITION PERIOD ENDS
15 JULY 2026

OUR IP PORTFOLIO AT A GLANCE



INNOVATION
Continuous R&D driving industry-leading solutions



PATENT PENDING
Encapsulator® Life Extension System (Patent Applied For)



TRADEMARKS GRANTED
Encapsulator® Life Extension Certificate & Infrastructure Life Extension – The Fastest Route to Net Zero



QUALITY & PROTECTION
Legally protected solutions you can trust and specify with confidence

WHY THIS MATTERS

- Unique, proprietary solutions you won't find elsewhere
- Technology backed by intellectual property protection
- Assurance of quality, safety and long-term performance
- Supports compliance, sustainability and Net Zero goals
- Protecting innovation. Delivering value.



INTELLIGENT SOLUTIONS. PROTECTED INNOVATION. SUSTAINABLE FUTURES.

Extending life. Reducing risk. Delivering Net Zero.



EXTENDS LIFE BY 50+ YEARS



REDUCES EMBODIED CARBON



LOWER LIFECYCLE COSTS



SAFER ASSETS. PROTECTING LIVES.

HS2

A new bridge constructed using recycled concrete was identified with significant quality and durability issues.

THE CHALLENGE



Recycled aggregates (including clinker and pumice from kilns) had absorbed moisture and did not flow effectively.



During pouring, the concrete absorbed moisture which caused honeycombing and void formation.



Extensive defects compromised structural integrity and the bridge was condemned.

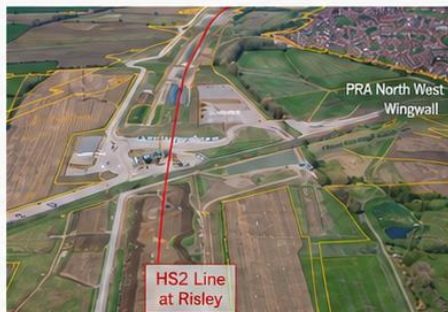


Traditional repair methods would have been time-consuming, costly and carbon intensive.



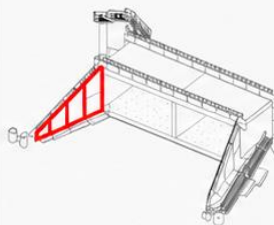
We deployed advanced non-destructive scanning to map voids and defects, designed and quantified results to ensure long-term performance and compliance.

THE PROJECT



A key bridge on the HS2 route

DESIGN



Key Plan

Figure 4. Plan outlining the PRA Northwest Wingwall

THE PROBLEM



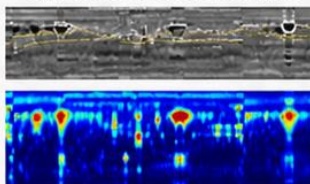
Severe defects – honeycombing and voids

Defects were extensive and hidden within the structure.

THE DEFECT IDENTIFICATION PROCESS

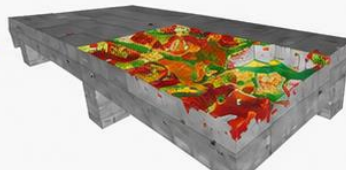
1. ADVANCED SCANNING

GPR, UPE & other NDT technologies deployed to map internal condition.



2. DEFECT MAPPING

Voids, honeycombing and deterioration accurately identified and quantified.



3. TARGETED REPAIR

Precision injection of our Encapsulator® technology to fill voids and restore integrity.



DATA LED.
PRECISION LED.
OUTCOME LED.

Turning hidden risk into informed action and restored performance.



SAFEGUARDING INFRASTRUCTURE

Restored structural integrity and long-term durability



COST & TIME SAVING

Avoided demolition and rebuild, minimising disruption and cost



LOWER CARBON IMPACT

Sustainable repair saved significant embodied carbon



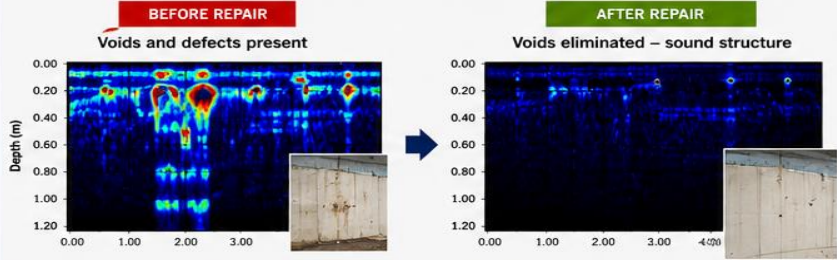
ASSURED PERFORMANCE

Independently verified results and documented assurance

VERIFICATION & OUTCOMES – VOIDS ELIMINATED, PERFORMANCE RESTORED

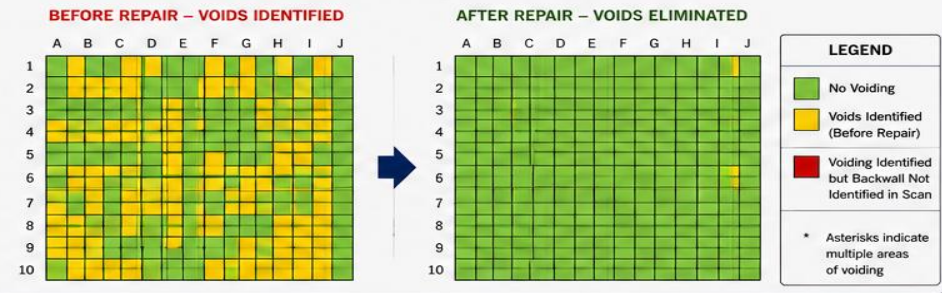
4. RESCAN – VOIDS ELIMINATED

Post-repair scans confirm voids eliminated and continuity restored.

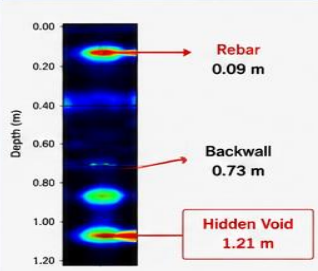


5. VOIDING MAP COMPARISON

Rescanned defect map shows a significant reduction in voiding.




6. DEPTH ANALYSIS – TARGETED RESULTS



Detailed data analysis confirmed voids beneath the surface.

Tag No.	Tag Type	Transmission Time (µs)	Calculated Depth (mm)
1	Rebar	75.4	106
2	Backwall	522.2	733
3	Hidden Void	863.4	1,211



We could drill down into the data and identify hidden voids beneath the surface. In this instance at 121mm.

7. COMPLETED WORK

- ✓ Precision injection using Encapsulator® technology
- ✓ Voids filled and structural continuity restored
- ✓ Bridge integrity reinstated
- ✓ Independent verification through post-repair scanning
- ✓ Detailed records and reports provided for compliance



Bridge restored. Integrity confirmed. Future assured.



SAFER INFRASTRUCTURE
Restored strength and structural integrity



COST & TIME SAVINGS
Avoided demolition and rebuild, minimised delays and costs



LOWER CARBON IMPACT
Sustainable repair saved significant embodied carbon



ASSURED PERFORMANCE
Independently verified results and documented assurance



COMPLIANCE & CONFIDENCE
Full reporting for stakeholders, asset owners and regulators



5 CASE STUDY: NORTH DEVON LINK ROAD

CLIENT – DEVON HIGHWAYS



Infrastructure
Life Extension
THE FASTEST ROUTE TO NET ZERO

1. PROJECT OVERVIEW

Bridge bases on the A361 Link Road were suffering from thermal cracking. If left untreated, water ingress could reach the reinforcement, leading to corrosion and premature failure.



THE CHALLENGE

Thermal cracks (0.2mm to 0.8mm) allowed water penetration, compromising durability and design life.



THE SOLUTION

Advanced scanning, targeted injection with our structural resin, and independent verification.



THE OUTCOME

Voids eliminated, cracks sealed, structural integrity restored, and design life extended.



1. DEFECT IDENTIFIED

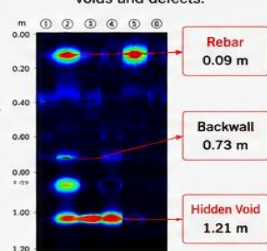
Thermal cracks from 0.2mm to 0.8mm identified.



Cracks measured and recorded.

2. SCANNING

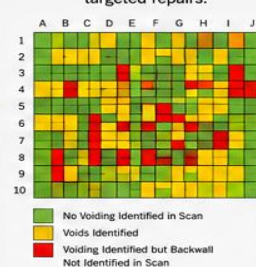
Advanced non-destructive scanning to identify hidden voids and defects.



Hidden voids identified at depth (e.g. 1.21m).

3. DEFECT MAPPING

Void and defect map created to guide targeted repairs.



Comprehensive mapping ensures nothing is missed.

4. TARGETED INJECTION

Structural resin injected into cracks and voids using Encapsulator® technology.



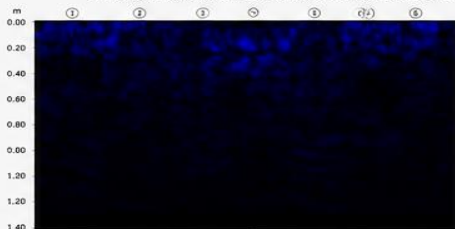
Precision injection restores monolithic integrity and prevents future ingress.

5. POST REPAIR VERIFICATION

Post-repair scanning confirms voids eliminated and continuity restored.



Verification by independent scanning confirms repairs were successful and structural continuity is restored.



Notes:

The scan undertaken to this location, post repairs shows no visible voids.

- No Voiding Identified in Scan
- Voiding & Backwall Identified in Scan
- Voiding Identified but Backwall Not Identified in Scan

* Asterisks indicate multiple areas of voiding

6. OUTCOME & CERTIFICATION

Repairs verified and independently documented.



Encapsulator® Life Extension Certificate



Concrete Burst® Certificate

- ✓ Voids and cracks eliminated
- ✓ Structural integrity reinstated
- ✓ Design life extended
- ✓ Condemned assets saved
- ✓ Independent verification and certification provided



ASSETS RESTORED.
RISKS REDUCED.
FUTURES PROTECTED.

THE BENEFITS DELIVERED



SAFER INFRASTRUCTURE
Restored strength and structural integrity



COST & TIME SAVINGS
Avoided demolition and rebuild, minimised disruption and cost



LOWER CARBON IMPACT
Sustainable repair saved significant embodied carbon



ASSURED PERFORMANCE
Independently verified results and documented assurance



COMPLIANCE & CONFIDENCE
Full reporting for stakeholders, asset owners and regulators



STRUCTURAL SOLUTIONS WHEN OTHERS SAY NO.

PUSHING BOUNDARIES. EXTENDING LIFESPANS.

6 CASE STUDY: WATER INDUSTRY

RESTORING INFRASTRUCTURE. EXTENDING LIFE. DELIVERING NET ZERO.



Infrastructure Life Extension
THE FASTEST ROUTE TO NET ZERO

PROJECT OVERVIEW

56 concrete service tanks at Watchgate were at the end of their design life.

Deterioration, cracking and leakage threatened operational reliability and water quality.

THE CHALLENGE
Aging tanks with widespread cracking, voiding and reinforcement corrosion. High risk of failure and costly replacement.

THE SOLUTION
Advanced scanning, structural resin injection and independent verification to restore integrity and stop deterioration.

THE OUTCOME
Tanks restored to full structural health, extended design life and environmental impact dramatically reduced.



ASSET PROFILE

- 56 No. concrete service tanks
- Approx. dimensions (each tank): 25m (L) x 8m (W) x 4m (D)
- Location: Watchgate, near Manchester
- Client: Water Industry

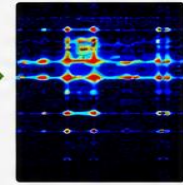
OUR PROVEN 5-STEP SOLUTION

1 DEFECT IDENTIFICATION
Thermal cracks, voids and deterioration identified.



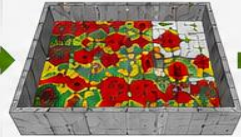
Cracking mapped and measured.

2 ADVANCED SCANNING
GPR, UPE & other NDT technologies used to detect hidden voids and defects.



Hidden voids identified at depth.

3 DEFECT MAPPING
Comprehensive 3D mapping created to guide targeted repairs.



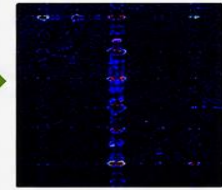
Nothing missed. Everything mapped.

4 TARGETED INJECTION
Structural resin injected into cracks and voids using Encapsulator® technology.



Precision injection restores monolithic integrity.

5 INDEPENDENT VERIFICATION
Post-repair scanning verifies voids eliminated and performance restored.



Structural integrity confirmed.

— TRANSFORMING OUTCOMES —

ESTIMATED COST TO DEMOLISH & REPLACE

£450M+

Estimated capital cost to demolish and rebuild

TOTAL COST TO RESTORE

£9M

Using our technology and proven process

COST SAVING

£441M+

A saving of over 98%

ENVIRONMENTAL IMPACT REDUCTION

> 90%

Less CO₂, waste, and disruption

ASSET LIFE EXTENSION

25+ YEARS

Restored to full structural health and extended life

OPERATIONAL BENEFITS

- ✓ Continued service reliability
- ✓ Improved water quality protection
- ✓ Avoided service disruption
- ✓ Regulatory compliance assured

SMARTER SOLUTIONS. STRONGER FUTURES.

By extending the life of critical water infrastructure, we help secure resources, protect the environment and support a sustainable, Net Zero future.

Infrastructure Life Extension
THE FASTEST ROUTE TO NET ZERO

DELIVERING LONG-TERM VALUE

- ✓ Preserves critical water infrastructure
- ✓ Significant cost savings
- ✓ Major reduction in carbon emissions
- ✓ Minimal disruption to operations
- ✓ Sustainable solution, future focused
- ✓ Independently verified & certified

STRUCTURAL SOLUTIONS WHEN OTHERS SAY NO.

PUSHING BOUNDARIES. EXTENDING LIFESPANS.

SMARTER SOLUTIONS. STRONGER FUTURES.

7 CASE STUDY: NETWORK RAIL – RAAC

CRITICAL INFRASTRUCTURE STRENGTHENING – RAAC CONCRETE

PROJECT OVERVIEW



Didcot Maintenance Depot Central Delivery Unit

The facility houses critical signalling infrastructure for the UK rail network.

The roof was constructed using RAAC (Reinforced Autoclaved Aerated Concrete), which was identified with widespread cracking and deterioration.

THE CHALLENGE

RAAC was prone to cracking and potential failure, risking operational disruption and significant safety concerns.

THE SOLUTION

Our bespoke carbon fibre and Kevlar reinforcement solution restored structural integrity and extended asset life.

THE OUTCOME

The roof was strengthened to full structural health, ensuring the continuity of critical operations and delivering major cost, time and environmental savings.



Central Delivery Unit
Didcot Maintenance
Depot

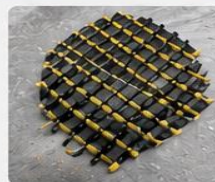


OUR BESPOKE CARBON FIBRE & KEVLAR SOLUTION



BESPOKE CARBON FIBRE & KEVLAR SOLUTION

- ✓ High-strength carbon fibre & Kevlar reinforcement for RAAC concrete
- ✓ Adhesive Riveting Technology (ART) for a mechanical bond
- ✓ Lightweight, non-corrosive and rapid installation
- ✓ Tested, proven and independently verified



AWARD WINNING INNOVATION



UKCS
The UK
Concrete
Show

New
Product
Award
2025

WINNER
Structural Repairs
Fortress Re:Grid

Recognised for innovation in RAAC reinforcement using carbon fibre and Kevlar.
Stronger. Safer. Smarter.



TRANSFORMING OUTCOMES



COSTS TO DEMOLISH

HUGE

Demolition and replacement would have required significant investment and disruption.



COST SAVINGS

HUGE

Our solution cost just a fraction (approx. 8%) of replacement works.



ASSET LIFE EXTENSION

25+ YEARS

Extends the life of the structure without disruption to operations



ENVIRONMENTAL BENEFIT

Significant reduction in carbon, waste and environmental impact by avoiding demolition and rebuilding.

EXTENDING THE LIFE OF CRITICAL ASSETS

Helping protect vital infrastructure, reduce costs, and build a more sustainable future.



STRUCTURAL SOLUTIONS WHEN OTHERS SAY NO.

PUSHING BOUNDARIES. EXTENDING LIFESPANS.



SMARTER SOLUTIONS.
STRONGER FUTURES.

8 CASE STUDY: MINISTRY OF DEFENCE (MOD)

PROUDLY WORKING IN PARTNERSHIP FOR THE PRESERVATION OF LIFE
Strengthening Critical Buildings to Protect What Matters Most.



Ministry of Defence



Infrastructure Life Extension
THE FASTEST ROUTE TO NET ZERO

ENHANCING STRENGTH. RESISTING THREATS. PRESERVING LIVES.



DELIVERING DEFENCE SOLUTIONS THAT SAVE LIVES AND EXTEND CRITICAL INFRASTRUCTURE LIFE.

THE CHALLENGE

Critical defence buildings must withstand extreme threats including ballistic attack, blast loads and dynamic impact – while continuing to operate safely and effectively.

OUR SOLUTION

We use advanced carbon fibre reinforcement systems to strengthen concrete and masonry structures, significantly improving their resistance to bullets, missiles, blast and impact.

THE BENEFIT

- Protect personnel and critical assets
- Extend infrastructure life
- Maintain operational readiness
- Reduce downtime and disruption
- Cost-effective vs. rebuild or replace

DELIVERING FOR THOSE WHO PROTECT OUR NATION.

— ADVANCED CARBON FIBRE SOLUTIONS —

STRONGER SAFER PROTECTED

ENGINEERED TO RESIST BALLISTIC IMPACTS, MISSILE STRIKES & BLAST LOADING.

BALLISTIC RESISTANCE
Bullet & missile threat mitigation

BLAST STRENGTH
Improved resilience against blast loads

STRUCTURAL STRENGTH
Increased load capacity and durability

LIFE EXTENSION
Extend service life 25+ years

CARBON FIBRE REINFORCEMENT
High-strength load distribution

ADHESIVE RIVETING TECHNOLOGY (ART™)
Creates a mechanical bond throughout the substrate

ENHANCED STRUCTURAL INTEGRITY
Increased resistance to penetration, blast and impact

TRUSTED. TESTED. DEPLOYED.

PROTECTING TODAY. PRESERVING TOMORROW.
ENGINEERED FOR DEFENCE. BUILT TO LAST.

ENHANCED PROTECTION
Significantly improves resistance to ballistic and blast threats.

EXTENDED LIFE
Adds 25+ years to existing structures without disruption.

COST EFFECTIVE
A fraction of the cost of rebuild or major strengthening.

LOWER ENVIRONMENTAL IMPACT
Reduces waste, carbon emissions and resource use compared to demolition and rebuild.

WORKING TOGETHER FOR A SAFER FUTURE.
Innovation. Integrity. Impact.

STRUCTURAL SOLUTIONS WHEN OTHERS SAY NO.

PUSHING BOUNDARIES. EXTENDING LIFESPANS.

SMARTER SOLUTIONS. STRONGER FUTURES.

EARTHQUAKE DISASTERS. REAL-WORLD SOLUTIONS.

TRUSTED BY ENGINEERS & ORGANISATIONS WORLDWIDE
TO STRENGTHEN STRUCTURES & SAVE LIVES.



PROVEN IN DISASTER
STRUCTURES ASSESSED
IN EARTHQUAKE ZONES
ACROSS MULTIPLE COUNTRIES.



CONTACTED GLOBALLY
ENGINEERS, GOVERNMENTS &
ORGANISATIONS WORLDWIDE
TRUST OUR SOLUTIONS.



BUILT FOR EXTREME RESILIENCE
CARBON FIBRE & KEVLAR SYSTEMS
DESIGNED TO RESTORE STRENGTH,
DURABILITY & SAFETY.



**OUR SOLUTIONS
HELP REBUILD.
STRONGER.
SAFER.**

IDEAL FOR EARTHQUAKE
& DISASTER AFFECTED
INFRASTRUCTURE.

PROUDLY WORKING WITH THE
MOD
FOR THE PRESERVATION OF LIFE



MINISTRY
OF DEFENCE

EXTENDING INFRASTRUCTURE LIFE. PROTECTING COMMUNITIES. DELIVERING NET ZERO.

**STRUCTURAL
REPAIRS**



CERTIFICATE NO:
SR-LIFE-EXT-001

DATE OF ISSUE:
10 MAY 2025

ENCAPSULATOR LIFE EXTENSION CERTIFICATE® INFRASTRUCTURE LIFE EXTENSION COMMITMENT

This certificate confirms the professional application of advanced structural repairs and carbon fibre reinforcement systems with a commitment to extend asset life, reduce emissions and support Net Zero.



PROTECT. STRENGTHEN. EXTEND. SUSTAIN.

ASSET DETAILS

📍 Asset:	Industrial Infrastructure
🏢 Asset Type:	Industrial Infrastructure
🌐 Location:	Global
🏗️ Structure:	Reinforced Concrete
🕒 Service Life:	25+ Years
🔧 Repaired Using:	Carbon Fibre Reinforcement
📅 Life Extension:	Extend Life 25+ Years
📅 Date Certified:	10 May 2025

LIFE EXTENSION CERTIFICATION PLEDGE

- ✅ Extend Life 25+ Years
- ✅ Reduce Emissions
- ✅ Minimise Waste
- ✅ Lower Carbon Footprint
- ✅ Save Time & Disruption
- ✅ Save Resources & Cost

Smarter Repairs. Stronger Future.

EXTEND ASSET
LIFE 25+ YEARS



**+25
YEARS**

REDUCE CARBON
EMISSIONS



92%
LOWER CARBON
FOOTPRINT

MINIMISE WASTE
& DISRUPTION



164,000
KG WASTE
SAVED

PROTECT CRITICAL
INFRASTRUCTURE



**MINIMISED
DISRUPTION
& COSTS**

SAVE TIME
& RESOURCES



**SMARTER REPAIRS.
STRONGER FUTURE.**



**STRENGTHEN TODAY.
PROTECT TOMORROW.**



**GLOBAL EXPERTISE.
LOCAL IMPACT. WORLDWIDE.**



**ENGINEERED SOLUTIONS.
REAL-WORLD RESULTS.**

EARTHQUAKES DON'T DISCRIMINATE. BUT STRONGER INFRASTRUCTURE SAVES LIVES.

PROUDLY SUPPORTING EARTHQUAKE & DISASTER RESILIENT INFRASTRUCTURE WORLDWIDE.



CONTACTED BY
ORGANISATIONS
AROUND THE WORLD



RAPID RESPONSE.
EXPERT SOLUTIONS.
REAL-WORLD IMPACT.



OUR CARBON FIBRE & KEVLAR
SOLUTIONS STRENGTHEN STRUCTURES
WHEN IT MATTERS MOST.

6 FEBRUARY 2023 – KAHRAMANMARAS, TÜRKIYE

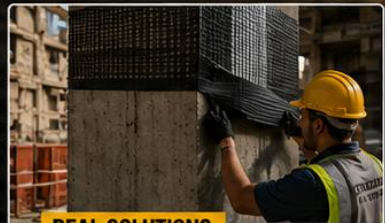
DEVASTATING EARTHQUAKES. THOUSANDS OF BUILDINGS DAMAGED.
INDEPENDENT ENGINEERING ASSESSMENTS CONFIRM THE NEED FOR STRONGER, SAFER STRUCTURES.



REAL DISASTERS.
REAL CONSEQUENCES.



REAL EXPERTISE.
REAL ASSESSMENTS.



REAL SOLUTIONS.
REAL STRENGTH.

STRENGTHEN EXISTING STRUCTURES
IMPROVE SEISMIC PERFORMANCE

EXTEND ASSET LIFE
REDUCE FUTURE RISK

HELPING COMMUNITIES
REBUILD SAFER

ENGINEERED IN THE UK.
TRUSTED WORLDWIDE.

ENGINEERED TO PROTECT.
BUILT TO LAST.

GLOBAL SOLUTIONS.
REAL-WORLD RESULTS.

PROTECTING COMMUNITIES.
PRESERVING TOMORROW.

TRUSTED TECHNOLOGY.
PROVEN COMMITMENT.

**STRUCTURAL
REPAIRS**



CERTIFICATE NO:
SR-LIFE-EXT-001
DATE OF ISSUE:
10 MAY 2025

ENCAPSULATOR LIFE EXTENSION CERTIFICATE® INFRASTRUCTURE LIFE EXTENSION COMMITMENT

This certificate confirms the professional application of advanced structural repairs and carbon fibre reinforcement systems with a commitment to extend asset life, reduce emissions and support Net Zero.



ASSET DETAILS

Asset	Industrial Infrastructure
Asset Type	Industrial Infrastructure
Location	Global
Structure	Reinforced Concrete
Service Life	25+ Years
Repaired Using	Carbon Fibre Reinforcement
Life Extension	Extend Life 25+ Years
Date Certified	10 May 2025

LIFE EXTENSION CERTIFICATION PLEDGE

- Extend Life 25+ Years
- Reduce Emissions
- Minimise Waste
- Lower Carbon Footprint
- Save Time & Disruption
- Save Resources & Cost

EXTEND ASSET
LIFE 25+ YEARS

**+25
YEARS**

REDUCE CARBON
EMISSIONS

92%
LOWER CARBON
FOOTPRINT

MINIMISE WASTE &
DISRUPTION

164,000
KG WASTE
SAVED

PROTECT CRITICAL
INFRASTRUCTURE

**MINIMISED
DISRUPTION
& COSTS**

SAVE TIME
& RESOURCES

**SMARTER REPAIRS.
STRONGER FUTURE.**



AWARD-WINNING INNOVATION
RECOGNISED FOR CHANGING
THE FUTURE OF STRUCTURAL REPAIRS.

ENCAPSULATOR LIFE EXTENSION CERTIFICATE®

INFRASTRUCTURE LIFE EXTENSION COMMITMENT

This certificate confirms the professional application of advanced structural repairs and carbon fibre reinforcement systems with a commitment to extend asset life, reduce emissions and support Net Zero.



ASSET DETAILS

- Asset: Industrial Infrastructure
- Asset Name: Industrial Infrastructure
- Location: United Kingdom
- Location: SD+ Years
- Structure: Water Industry
- Service Type: We Years
- Repaired Using: Carbon Fibre Reinforcement
- Life Extension: 25+ Years
- Date Certified: 10 May 2025

LIFE EXTENSION CERTIFICATION PLEDGE

- Extend Life 25+ Years
- Reduce Emissions
- Minimise Waste
- Lower Carbon Footprint
- Save Time & Disruption
- Save Resources & Cost

Smarter Repairs. Stronger Future.

OUR COMMITMENT

We are committed to delivering long-term infrastructure solutions that extend asset life, reduce environmental impact and support the transition to a sustainable, Net Zero future for generations to come.

EXTENDED LIFE

**+50
YEARS**

EMISSIONS REDUCED

**92%
LOWER CARBON
FOOTPRINT**

WASTE REDUCED

**164,000
KG WASTE
SAVED**

RESOURCE SAVING

**MINIMISED
DISRUPTION &
COSTS**

TECHNOLOGY BENEFITS

- Restores structural integrity and strength
- Enhances resistance to environmental damage
- Extends service life significantly
- Cost-effective alternative to rebuild or replace
- Sustainable, low-impact solution

ADVANCED SOLUTIONS

- Carbon Fibre Reinforcement Systems
- High-Performance Structural Repairs
- Corrosion Protection Systems
- Precision Engineered Applications
- Minimal Downtime / Maximum Uptime

CARBON IMPACT COMPARISON



CERTIFIED FOR SUSTAINABILITY

All works are completed in accordance with industry best practice, engineering standards and our Net Zero Pledge.

APPROVED & VERIFIED

Independently verified performance. Trusted. Proven. Certified.



TECHNICAL APPROVAL
 QUALITY ASSURANCE
 NET ZERO COMPLIANCE
 NET ZERO COMMITMENT
 All signatures are for Structural Repairs Ltd.



SCAN TO LEARN MORE ABOUT OUR NET ZERO PLEDGE. INNOVATE SUSTAIN PROTECT www.structuralrepairs.uk

EXTENDING LIFE. REDUCING IMPACT.

OUR COMMITMENT. YOUR LEGACY.

CERTIFIED SOLUTIONS FOR A
STRONGER, SUSTAINABLE FUTURE.



EXTEND ASSET
LIFE 25+ YEARS



REDUCE CARBON
EMISSIONS



MINIMISE WASTE
& DISRUPTION



PROTECT CRITICAL
INFRASTRUCTURE



SAVE TIME
& RESOURCES



Infrastructure Life Extension

THE FASTEST ROUTE TO NET ZERO

**STRUCTURAL
REPAIRS**



ENGINEERED TO PROTECT. BUILT TO LAST.

LESS WASTE. LOWER EMISSIONS. LONGER LIFE.



PRESERVING TODAY.
PROTECTING TOMORROW.

 PROUDLY BRITISH.

ENGINEERED HERE. TRUSTED WORLDWIDE.

DESIGNED. MANUFACTURED. TESTED. IN THE UK.



ADVANCED SOLUTIONS.
STRONGER FUTURES.



PROUDLY MANUFACTURED
IN THE UK
AT OUR STATE-OF-THE-ART
FACILITY IN DONCASTER



-  BRITISH MANUFACTURING EXCELLENCE
-  INNOVATION DRIVEN BY EXPERTISE
-  QUALITY YOU CAN RELY ON
-  SOLUTIONS THAT PROTECT OUR WORLD

RESEARCH & DEVELOPMENT INNOVATING FOR A SAFER TOMORROW

Our in-house R&D team and advanced laboratory facilities drive continuous innovation in carbon fibre & Kevlar solutions for the world's toughest challenges.



CUTTING-EDGE TESTING PROVEN. RELIABLE. UNCOMPROMISING.


From structural performance to ballistic resistance, our testing facilities ensure every solution meets the highest standards of safety and protection.



BALLISTIC & IMPACT TESTING FACILITIES



 **EARTHQUAKE & DISASTER RESILIENT SOLUTIONS**
Strengthening critical infrastructure in the world's most demanding environments.

 **PROVEN PERFORMANCE**
Independently tested. Engineered to exceed. Built to last.

 **SUSTAINABLE BY DESIGN**
Lower carbon. Longer life. Smarter choice.

 **TRUSTED BY GOVERNMENT & DEFENCE SECTORS**
Delivering advanced protection for the preservation of life and critical infrastructure.



ALWAYS INNOVATING.
ALWAYS MOVING FORWARD.

PUSHING BOUNDARIES.
SETTING NEW STANDARDS.



 **BRITISH ENGINEERING.
GLOBAL IMPACT.**

STRONGER STRUCTURES.
STRONGER COMMUNITIES.
STRONGER FUTURES.



STRUCTURAL REPAIRS
ENGINEERED TO PROTECT. BUILT TO LAST.

THE RIGHT ENGINEERING INTERVENTION **EXTENDS LIFE.** **CHANGES EVERYTHING.**



EXTEND INFRASTRUCTURE
BY ANOTHER 50 YEARS



PROTECT COMMUNITIES.
REDUCE EMISSIONS.



BUILD A STRONGER,
SUSTAINABLE FUTURE.

Infrastructure Life Extension THE FASTEST ROUTE TO NET ZERO



STRUCTURAL REPAIRS — PROUDLY LEADING THE FUTURE
OF INFRASTRUCTURE LIFE EXTENSION **IN THE UK** 



CUTTING-EDGE
SOLUTIONS



AWARD-WINNING
INNOVATION



PROVEN.
RELIABLE.
TRUSTED.



ENGINEERED
TO PROTECT.
BUILT TO LAST.



DON'T DEMOLISH.
EXTEND. STRENGTHEN. SUSTAIN.



CHANGING INFRASTRUCTURE.
CHANGING THE WORLD.

STRUCTURAL
REPAIRS

[structuralrepairs.com](https://www.structuralrepairs.com)